

**WEB
GUI**

**up to
12 ASI**

**Hi-Speed
ASI**

**Built-in
TS
Analyzer**

**FPGA
based**

IP to ASI CONVERTER

The IP to ASI Converter is perfectly capable of receiving hi-speed IP streams comes from headends or IP streams comes from TV studios and transform these streams to ASI.



Using the ASI output solution is quite an expensive and complex task. This is why due to the IP networks' expansion, digital headends are more likely to use IP outputs. Nowadays we can hardly find a device that is also equipped with an ASI output however professional applications still require this technology.

CableWorld's IP to ASI converter is available with 4, 8 or 12 inputs. The incoming IP streams' speed can go up to 200 Mbit/s per channel but the maximal bandwidth parallelly on all channels are limited to 1 Gbit/s. The device is capable of receiving transport streams that were embedded in UDP/RTP protocol streamed in unicast or multicast.

There may be 2 kinds of output ASI signals: in case of high-speed incoming stream the „Hi-Speed ASI” mode allows to process the signal up to the speed of 200 Mbit/s. In case of a lower speed incoming stream (under 70 Mbit/s) the normal ASI output should be applied.

The device has some extra features such as the built-in transport stream analyzer, removing null packets or filtering the stream depending on the source and / or destination's IP address or port number.

Fields of application:

- ✓ Transmission of high-speed IP streams - 200 Mbps – to ASI signal
- ✓ Feeding ASI inputs devices with streams from IP networks

- ✓ Web based user interface
- ✓ Separate management port
- ✓ IP inputs
- ✓ Processing Hi-speed streams
- ✓ Grounded ASI outputs
- ✓ Receptacle for SFP (Mini GBIC) module
- ✓ Software upgrade over web interface
- ✓ LED indicators of the active inputs
- ✓ Built-in transport stream analyzer
- ✓ FPGA based circuitry
- ✓ Long lifespan
- ✓ Extremely low power consumption

IP to ASI CONVERTER



Technical data

IP input

| | |
|----------------------|---------------------------------------|
| Speed | 10-, 100-, 1000Base-T |
| Connector type | RJ-45 |
| Protocol | Ipv4, ARP, IGMP, UDP, VLAN |
| Optical interface | 1000Base-X |
| Connection interface | receptacle for SFP (mini-GBIC) module |

ASI output

| | |
|----------------------|--|
| Protocol | according to TM 1449 Rec. 1 (connection between devices) |
| Impedance | 75 Ω |
| Number of connectors | 4, 8 or 12 |
| Connector type | BNC socket, grounded |
| Input data rate | max. 200 Mbit/s |
| Packet format | 188 or 204 Bytes/packet |

Management Port

| | |
|----------------|----------------|
| Speed | 10-, 100Base-T |
| Protocol | TCP/IP |
| Connector type | RJ-45 |

Transmission parameters

| | |
|-----------------|--|
| TS transmission | 1...7 TS packet/UDP, or RTP |
| PID filtering | for all PID values, without changing the PSI |
| Protocol | unicast or multicast |
| PCR correction | none |

General data

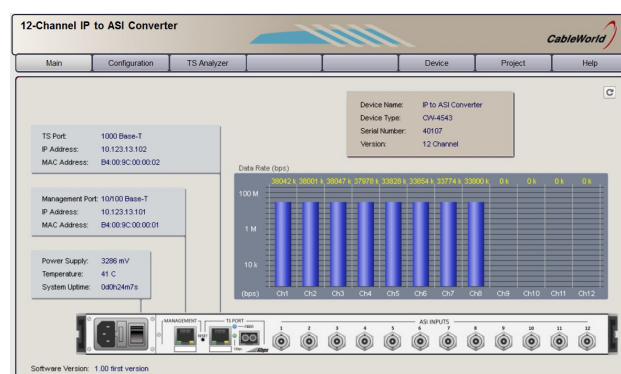
| | |
|------------------------|---------------------------------------|
| LED in the front panel | LINK, ACT, POWER ON and active inputs |
| LED in the rear panel | LINK and ACT |

| | |
|------------------------|---------------------|
| Mass | approx. 3.5 kg |
| Physical dimensions | 19" × 1 HU |
| Width × Height × Depth | 483 × 43.6 × 473 mm |

| | |
|---------------------------|-----------------------------|
| Power requirement | 90 ... 264 V, 47 ... 440 Hz |
| Power consumption | max. 35 VA |
| Temp. range for operation | +5 ... +40 °C |
| relative humidity | max. 80 % |
| Storage temperature range | -25 ... +45°C |
| relative humidity | max. 95 %, non-condensing |

Programming of the device

| | |
|-------------------------|---|
| Programming and control | over separate management port, in web environment, optimized to the Firefox browser |
| Default IP Address | 192.168.10.10 |
| Network mask | 255.255.255.0 |



The converter provides a variety of amenities for the user. Over the web based user interface we can get all necessary information about the basic features of the device.

Ordering data:

| | |
|----------------|---|
| CW-4541 | IP to ASI Converter IP inputs, 4 ASI outputs |
| CW-4542 | IP to ASI Converter IP inputs, 8 ASI outputs |
| CW-4543 | IP to ASI Converter IP inputs, 12 ASI outputs |

Your partner:



Budapest XI., Kondorfa u. 6/B
Hungary

Tel.: +36 1 204 7815

Fax.: +36 1 204 7839



Internet: www.cableworld.eu

E-mail: cableworld@cableworld.hu