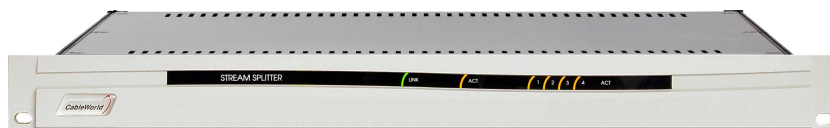
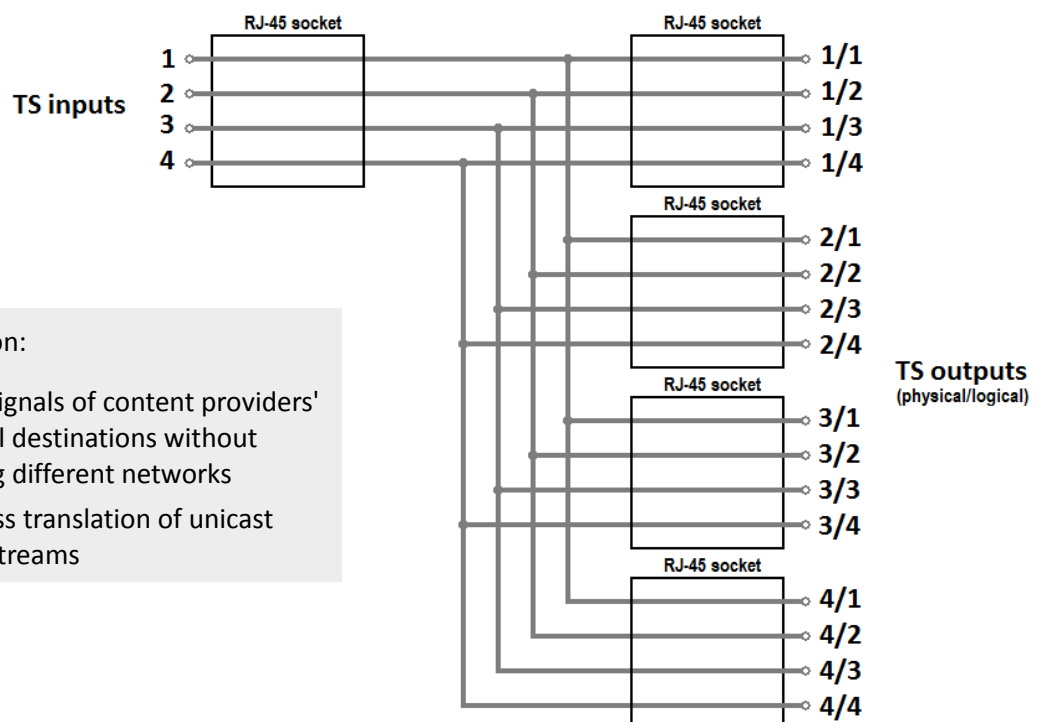


STREAM SPLITTER



The Stream Splitter is a 4/16 divider which forwards the source IP transport stream towards four physical and sixteen logical IP outputs by using network address translation (NAT).



Fields of application:

- ✓ forwarding IP signals of content providers' towards several destinations without interconnecting different networks
- ✓ network address translation of unicast and multicast streams

- ✓ Windows based user interface
- ✓ Gigabit Ethernet inputs and outputs
- ✓ 1 physical and 4 logical IP inputs
- ✓ 4 physical and 16 logical IP outputs
- ✓ Physically and logically separated TS input and TS output
- ✓ Network Address Translation (NAT)
- ✓ LED indicators of the active outputs
- ✓ FPGA circuitry
- ✓ Extremely low power consumption
- ✓ Long lifespan
- ✓ High reliability

STREAM SPLITTER



Technical data

IP input

Number of inputs	1 physical and 4 logical
Connector type	RJ-45 socket
Protocol	Ipv4, ARP, IGMP, UDP, RTP
Link	10-, 100-, 1000Base-T
Max input bitrate	950 Mbit/s

IP output

Number of outputs	4 physical and 16 logical
Connector type	RJ-45 socket
Protocol	Ipv4, ARP, IGMP, UDP, RTP
Link	10-, 100-, 1000Base-T
Max. output bitrate	950 Mbit/s per RJ-45

Transmission parameters

TS transmission	UDP/IP encapsulation
Transmission mode	transparent or IPTV format
Packet format	1...7 TS packet/UDP
Protocol	unicast or multicast

General Data

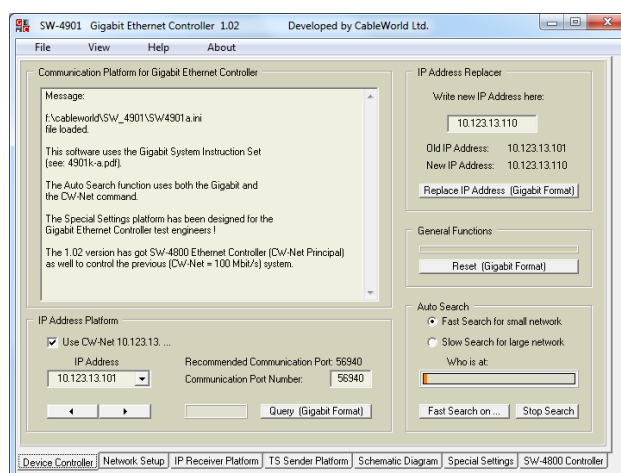
LEDs in the front panel	LINK, ACT, active inputs
LEDs in the rear panel	LINK and ACT
Mass	approx. 3,5 kg
Physical dimensions	19" x 1 HU
With x Height x Depth	483 x 43.6 x 473 mm
Service period	24/7, continuous
Power requirement	90 ... 264 V, 47 ... 440 Hz
Power consumption	max. 35 VA
Temp. range for operation	+5 ... +40°C
Relative humidity	max. 80 %
Storage temperature range	-25 ... +45°C
Relative humidity	max. 95 %, non-condensing

Management

Programing and monitoring over the input and output interfaces by using the Windows based SW-4941 controller software

Default IP Addresses

TS input	10.123.13.101
TS output 1	10.123.13.102
TS output 2	10.123.13.103
TS output 3	10.123.13.104
TS output 4	10.123.13.105



We appreciate receiving all remarks, experiences, measuring results with our products and we pay respect to them at our further developments.

Ordering data:

CW-4516 **Stream Splitter**
4/16 (physical/logical) transport stream splitter

Your partner:



Budapest XI., Kondorfa u. 6/B
Hungary
Tel.: +36 1 204 7815
Fax.: +36 1 204 7839
Internet: www.cableworld.eu
E-mail: cableworld@cableworld.hu

